

Public Document Pack



TRAFFORD
COUNCIL

AGENDA PAPERS FOR HEALTH SCRUTINY COMMITTEE

Date: Wednesday, 14 September 2022

Time: 6.30 p.m.

**Place: Committee Room 2 and 3, Trafford Town Hall, Talbot Road, Stretford,
M32 0TH**

A G E N D A	PART I	Pages
1.	ATTENDANCES	
	To note attendances, including Officers, and any apologies for absence.	
2.	DECLARATIONS OF INTEREST	
	Members to give notice of any interest and the nature of that interest relating to any item on the agenda in accordance with the adopted Code of Conduct.	
3.	MINUTES	To Follow
	To receive and, if so determined, to agree as a correct record the Minutes of the meeting held on 28 June 2022.	
4.	QUESTIONS FROM THE PUBLIC	
	A maximum of 15 minutes will be allocated to public questions submitted in writing to Democratic Services (democratic.services@trafford.gov.uk) by 4 p.m. on the working day prior to the meeting. Questions must be within the remit of the Committee or be relevant to items appearing on the agenda and will be submitted in the order in which they were received.	
5.	ALTRINCHAM MINOR INJURIES UNIT	1 - 26
	To receive a report from the Director of Commissioning for Trafford, NHS Greater Manchester Integrated Care.	

6. DENTAL SERVICES To Follow

To receive a report from the Head of Primary Care for Greater Manchester, NHS Greater Manchester Integrated Care.

7. INTEGRATED CARE SYSTEM UPDATE Verbal Report

To receive a verbal update.

8. WORK PROGRAMME 27 - 34

For Members to consider the work programme and discuss items for consideration.

9. URGENT BUSINESS (IF ANY)

Any other item or items (not likely to disclose "exempt information") which, by reason of special circumstances (to be specified), the Chairman of the meeting is of the opinion should be considered at this meeting as a matter of urgency.

10. EXCLUSION RESOLUTION (REMAINING ITEMS)

Motion (Which may be amended as Members think fit):

That the public be excluded from this meeting during consideration of the remaining items on the agenda, because of the likelihood of disclosure of "exempt information" which falls within one or more descriptive category or categories of the Local Government Act 1972, Schedule 12A, as amended by The Local Government (Access to Information) (Variation) Order 2006, and specified on the agenda item or report relating to each such item respectively.

SARA TODD

Chief Executive

Membership of the Committee

Councillors M.P. Whetton (Chair), S. Taylor (Vice-Chair), A. Akinola, J. E. Brophy, S.J. Gilbert, B. Hartley, S. J. Haughey, J. Leicester, J. Lloyd, T. O'Brien, Mrs. P. Young, D. Acton (ex-Officio) and D. Western (ex-Officio).

Further Information

For help, advice and information about this meeting please contact:

Alexander Murray, Governance Officer

Tel: 0161 912 4250

Email: alexander.murray@trafford.gov.uk

Health Scrutiny Committee - Wednesday, 14 September 2022

This agenda was issued on **Tuesday, 6 September 2022** by the Legal and Democratic Services Section, Trafford Council, Trafford Town Hall; Talbot Road, Stretford, Manchester, M32 0TH

WEBCASTING

This meeting will be filmed for live and / or subsequent broadcast on the Council's YouTube channel <https://www.youtube.com/channel/UCjwbIOW5x0NSe38sgFU8bKg>. The whole of the meeting will be filmed, except where there are confidential or exempt items.

If you make a representation to the meeting you will be deemed to have consented to being filmed. By entering the body of the Committee Room you are also consenting to being filmed and to the possible use of those images and sound recordings for webcasting and/or training purposes. If you do not wish to have your image captured or if you have any queries regarding webcasting of meetings, please contact the Democratic Services Officer on the above contact number or email democratic.services@trafford.gov.uk

Members of the public may also film or record this meeting. Any person wishing to photograph, film or audio-record a public meeting is requested to inform Democratic Services in order that necessary arrangements can be made for the meeting. Please contact the Democratic Services Officer 48 hours in advance of the meeting if you intend to do this or have any other queries.

This page is intentionally left blank

TRAFFORD COUNCIL

Report to: Health Scrutiny Committee
Date: 14th September 2022
Report for: Information
Report of: Naomi Ledwith – Director of Commissioning, NHS Greater Manchester (Trafford)
John Wareing – Director Strategy, Manchester University NHS Foundation Trust

Report Title

Altrincham Minor Injuries Unit Update

Summary

This paper outlines the background and current position in relation to the Minor Injuries Unit (MIU) service delivered from Altrincham General Hospital and the plans to reopen the service. The paper also highlights the standing of the service in relation to the wider urgent care and health priorities across Trafford that the AMIU may impact. The details within this paper outline proposals moving forward to ensure the urgent care offers within Trafford are consistent with National guidelines and expectations, and meet the needs of the population.

Recommendation(s)

- 1) Note the contents of this report in terms of Urgent Care needs and the impact the stand down of Altrincham (MIU)
- 2) Advise on the proposal for stand up of the Altrincham MIU.
- 3) Support the undertaking system review of urgent care to understand need, access, demand /capacity, workforce available and financial flows, by December 2022.
- 4) Support that future strategic and operational recommendations will be made to Locality Board, Greater Manchester which are co-produced with population of Trafford which ensure resources are aligned based on need, access is simplified, variation and duplication are minimized whilst ensuring services are consistent with the national agenda in relation to the priorities for urgent care provision.

Contact person for access to background papers and further information:

Name: James Gray, Head of Unscheduled Care, NHS Greater Manchester (Trafford)

email: james.gray12@nhs.net

Altrincham Minor Injuries Unit Update

September 2022

1.0 Introduction and Background

- 1.1 This paper outlines the background and current position in relation to the Minor Injuries Unit (MIU) service delivered from Altrincham General Hospital. The paper also highlights the standing up of the service in relation to the wider urgent care and health priorities across Trafford that the AMIU may impact.
- 1.2 Altrincham Minor Injuries Unit (AMIU) treats minor injuries including broken limbs, simple wounds, bites, minor burns, cuts and lacerations. It is unable to accept patients who present with illness such as coughs, colds, headaches, allergies and sore throats.
- 1.3 General opening hours for the MIU are 08:00 – 20:00 from Monday to Friday and 10:00 – 18:00 at weekends. It is closed for public holidays.
- 1.4 The decision was taken to stand down AMIU in response to the Covid pandemic on 1st April 2020, allowing the workforce to support the Covid response. The unit was stood back up with reduced hours of delivery on 24th June 2021.
- 1.5 Due to challenges in providing adequate levels of workforce to safely staff the AMIU the decision was taken to stand the unit down again from the 28th of July 2021. The service has remained suspended since this date. During this time the Emergency Nurse Practitioner (ENP) staff who were based at the unit were redeployed to work and provide additional support at the Wythenshawe Emergency Department.
- 1.6 A briefing was shared with the system in November 2021 outlining the challenges with the ongoing suspension of the service and scrutiny were advised in June 2022 of the continued suspension due to staffing challenges. It was agreed that a further update would be provided in autumn 2022.
- 1.7 For 2019/20, urgent care attendance at Altrincham MIU was 12,269, representing 13.5% of the total urgent care attendance in that period. This is the second lowest utilisation (Salford lowest) in the borough amongst the monitored sites which may reflect an issue of capacity, public awareness or duplication of services offered elsewhere.

2.0 South locality Demographics and Determinants of Health

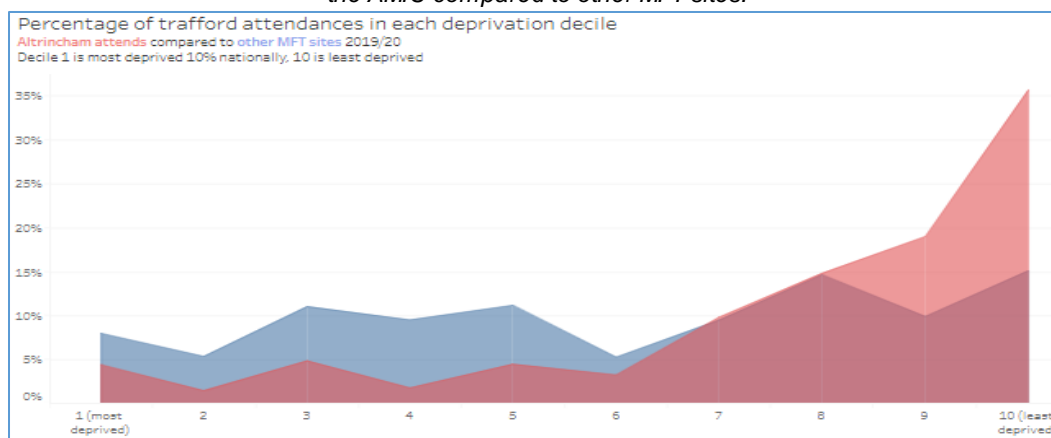
- 2.1 The south locality has the largest proportion of residents over the age of 64 and is Trafford's least deprived locality, containing 4 of the 5 least deprived wards (out of 21) in the borough. While the south of Trafford is more affluent, there are small pockets of higher deprivation in areas of Village, Broadheath, and Altrincham.
- 2.2 Within the context of wider determinants and Health, a relationship occurs between health and deprivation, as we generally see better health outcomes in areas of lower deprivation, as indicated in the south verses the north of Trafford.
- 2.3 Compared to the rest of the South neighbourhood, there are slightly worse child health, mortality, and hospital incidence outcomes in Village and Broadheath wards where we have some small areas of higher deprivation. Despite this, in most cases these wards have similar or better outcomes than the Trafford average.
- 2.4 A boy born in the south locality can expect to live 1.2 years longer than the average Trafford boy. A girl born in the south locality can expect to live 1.2 years longer than the average Trafford girl.

2.5 While the south has a higher proportion of older people, its healthy life expectancy is also higher than the Trafford average, meaning that people are healthier for longer. However, an older population does mean there are likely to be more people with conditions related to ageing in Trafford's south locality.

Table 1 Detailing the average life expectancy across the 4 neighbourhoods in Trafford compared to the Trafford and England Averages

	Male	Female
England	79.7	83.2
Trafford	80.2	83.9
North	77.2	83.1
West	78.7	83.4
Central	81.2	84.3
South	81.4	85.1

Graph 1: Detailing the percentage of Trafford patients from each deprivation decile in relation to attendances at the AMIU compared to other MFT sites.



2.6 Graph 1 and Table 2 shows the % of Altrincham attends in each national deprivation decile in pink, % of other MFT site attends in each decile in blue with 1 to the left of the graph being the most deprived and 10 to the right of the graph being the least deprived. As you can see the levels of attendances from those in less deprived areas is significantly higher than the most deprived areas. .

Table 2: Detailing the Deprivation decile and percentage of attends at AMIU along with non AMIU attends

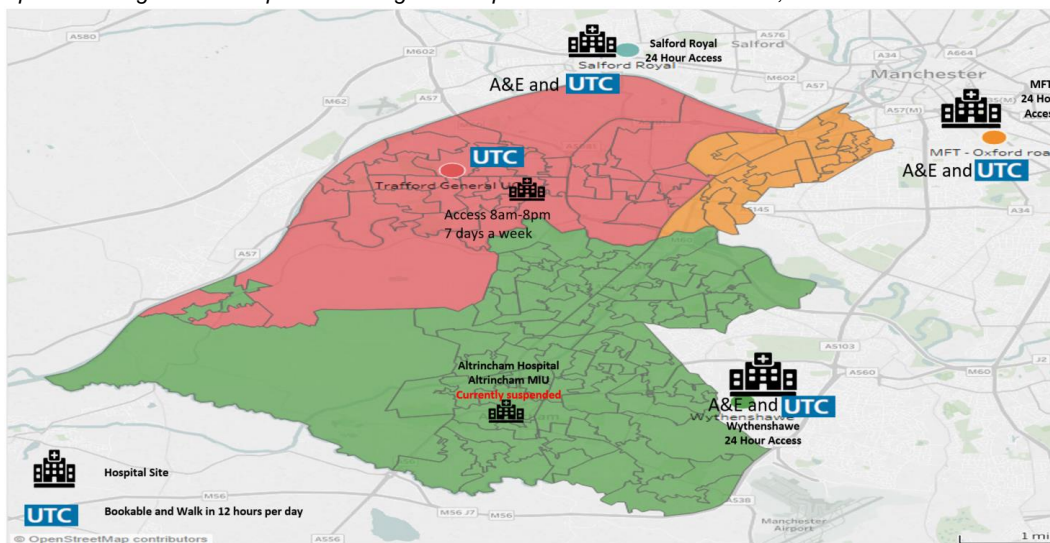
DeprivationDecile	% of altrincham attends	% of non-altrincham attends
1 (most deprived)	4%	8%
2	1%	5%
3	5%	11%
4	2%	10%
5	5%	11%
6	3%	5%
7	10%	10%
8	15%	15%
9	19%	10%
10 (least deprived)	36%	15%

2.7 Graph 1 and Table 2 outlines that the patients attending the AMIU were largely from less deprived areas. The highest proportion of attends at the AMIU were from the least deprived areas.

3.0 Usage and Provision of Services

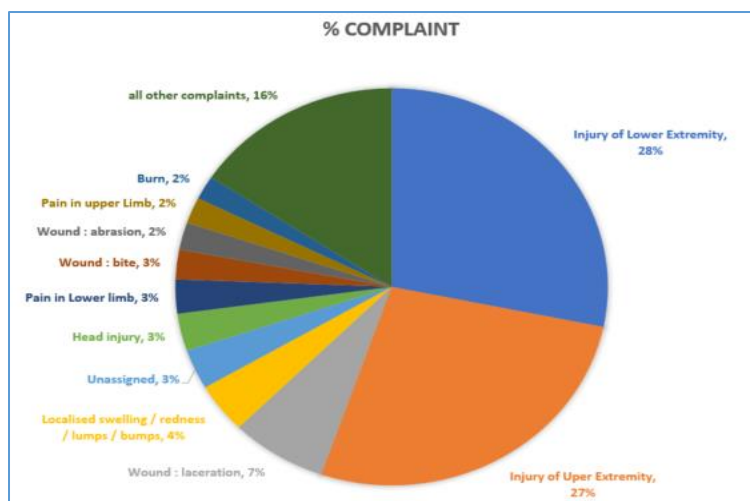
3.1 Across Trafford, patients are able to access a wide range of urgent care services both within Trafford and neighbouring localities such as Manchester and Salford. As shown on Map 1 the usage of the different hospital sites is split across the borough based on locality and proximity to these services the different colours of the map represent the areas within Trafford and the hospital site that is predominantly used by patients. The map shows the hospital which is most visited for urgent/emergency attends by each LSOA. For example there's an orange dot where MFT's Oxford road site is, and all of the LSOA's coloured in orange use Oxford road more than any other ED site. There's a green dot where Wythenshawe Hospital is, and all of the areas coloured in green use Wythenshawe more than any other ED site.

Map 1: Detailing the current position of urgent care provision across Manchester, Trafford and Salford



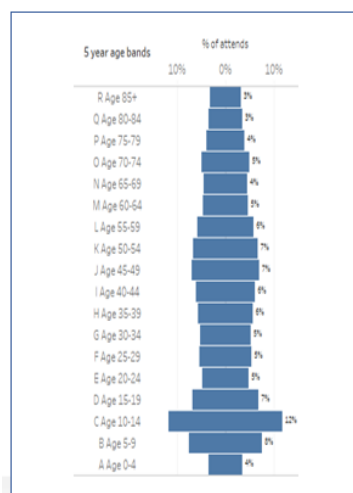
3.2 As detailed within the introduction of this paper the AMIU deals with a range of injuries. Graph 2 outlines the proportional split of those injuries across the patients that attend the unit. The largest number of attendees is for injuries to the lower extremities at 28% followed by the upper extremities at 27%, other injuries accounts for 16% and lacerations 7%.

4.0 Graph 2: Detailing the proportional split of presenting complaints to the AMIU



- 3.3 Graph 3 outlines the age profile of attendees reflects a relatively even split across most ages, but there is a spike in the “Age 5-9” and “Age 10-14” bands.

Graph 3: Detailing the age profile of attendees



- 3.4 Table 2/2a details the split of usage of these services amongst Trafford patients between 2018-2022. Note 2022-23 is only part year April 2022-Present.

Table 2: Detailing the usage of urgent care services by site between 2018-2022 for Trafford patients

Trafford urgent care attendances by site					
Provider site	Financial Year				
	2018-19	2019-20	2020-21	2021-22	2022-23
Wythenshawe	33,269	33,154	30,451	43,143	10,882
Trafford General UCC	20,697	21,181	13,054	16,250	4,751
Oxford road	18,020	17,139	13,803	15,826	3,962
Salford Royal	6,369	6,564	5,790	7,381	1,767
Altrincham MIU	12,949	12,269	2	659	1
NMGH	316	272	202	376	91

Table 2a: Detailing the proportional split of attendances by site 2018-2022 for Trafford patients

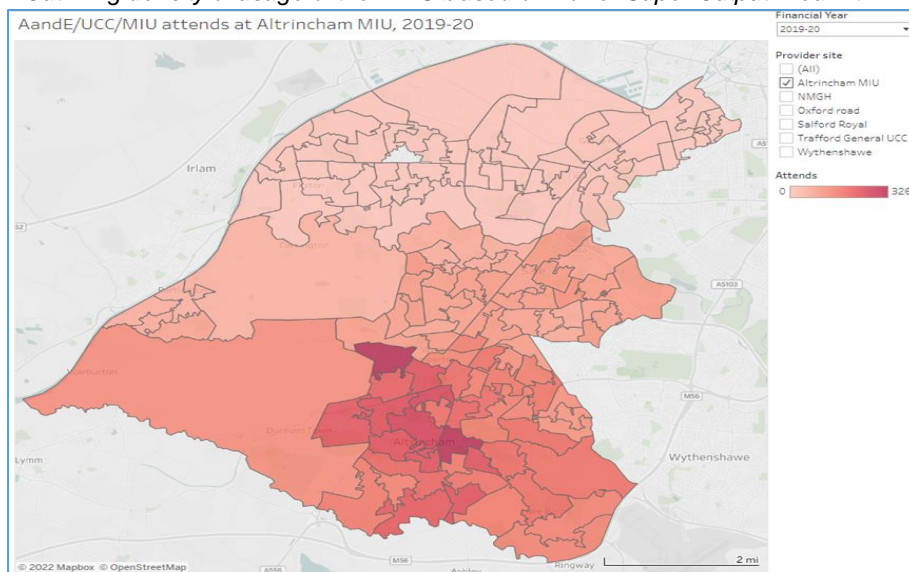
% of trafford urgent care attendances by site					
Provider site	Financial Year				
	2018-19	2019-20	2020-21	2021-22	2022-23
Wythenshawe	36.3%	36.6%	48.1%	51.6%	50.6%
Trafford General UCC	22.6%	23.4%	20.6%	19.4%	22.1%
Oxford road	19.7%	18.9%	21.8%	18.9%	18.4%
Salford Royal	7.0%	7.2%	9.1%	8.8%	8.2%
Altrincham MIU	14.1%	13.5%	0.0%	0.8%	0.0%
NMGH	0.3%	0.3%	0.3%	0.4%	0.4%

- 3.4 Tables 2 and 2a also demonstrate the shift in utilisation amongst patients during the time the AMIU site has been closed. The activity of 12,269 can be represented by a significant increase in attendances at the Wythenshawe site during 21/22 increasing from 33,154 on the site during 2019/20 to 43,143 attendances during 21/22. Note this

activity refers to Trafford patients only (There were 18,244, attendances in total at the AMIU during 2019/20, 5,972 of which were out of area patients¹).

- 3.5 When the AMIU stood down, the proportion of Trafford patients attending Wythenshawe increased. The increase was broadly in line with the proportion of patients previously attending the AMIU. Post 2019/20 ENP staff were temporarily redeployed to work at Wythenshawe ED.
- 3.6 Map 2 demonstrates the density of usage of the AMIU site based on Lower Super Output Areas across Trafford. As can be seen from the map highest density usage of the service is within close proximity to the AMIU. The darker the red LSOA the higher the proportion of usage within that area (the darker areas are Altrincham, Broadheath & Hale). As can be seen from the map there are a high number of areas within the borough that do not use the service, compared to those concentrated within the Altrincham vicinity that has a high rate of usage.

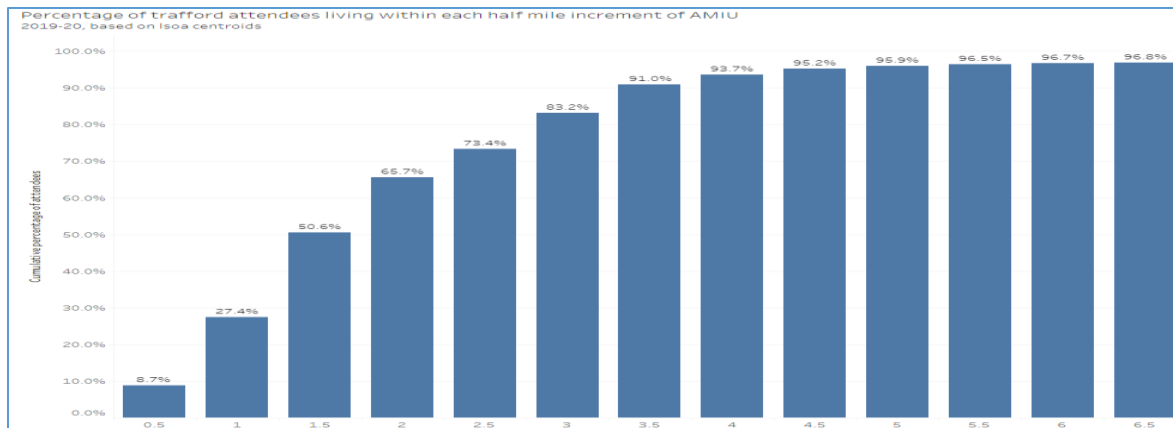
Map 2: Outlining density of usage of the AMIU based on Lower Super Output Area within Trafford



- 3.9 Graph 4 details the proximity in which Trafford patients travel to use the AMIU service. As can be seen from the graph just over 50% of patients travel 1.5 miles to the AMIU and 73% of patient travelled 2.5 miles to the service. Given the geographical make-up of the locality this outlines that the AMIU is actually only being used by a small proportion of the population within close proximity to Altrincham Hospital.

Graph 4: showing the percentage of AMIU attendees within each half mile of the AMIU

¹ 10% Manchester, 6% Warrington, 6% Eastern Cheshire, 3% Stockport, 1% Salford, 4% All other



4.0 National Guidance on Urgent Care Provision

- 4.1 As part of the NHS Long Term Plan, the NHS is changing the way patients access services. Patients have often expressed that they are confused by the range of different services on offer for urgent care and as a result the NHS has outlined their intentions to simplify this through reducing these different service to primary care hubs, Urgent Treatment Centres and Emergency Departments.²
- 4.2 Patients have told us the range of alternatives available can be confusing – Walk in Centres, Urgent Care Centres, Minor Injury Units and others with local names and all with differing levels of service. So A&E is understandably the default choice for many people unsure where to turn when they need urgent care or advice.
- 4.3 This is bad for the NHS because it puts unnecessary pressure on A&E and other parts of the urgent and emergency care system, and it's bad for patients because many are treated in the wrong setting.
- 4.4 The national aim is that commonality of service provision under the UTC name, will increasingly end the current confusing range of options and simplify the system so patients know where to go and have clarity of which services are on offer wherever they are in the country. As well as allowing NHS to better plan for capacity to meet demand.

5.0 Delivery proposal Altrincham Minor Injuries stand up

- 5.1 Proposals moving forward are for a phased approach to standing the AMIU back up. The proposals carry with them significant risk of ongoing suspension of the service due to workforce limitations. The service would still require additional ENPs to the current establishment and face similar challenges whilst not providing the same level of cover as previous delivery.

The proposals are:-

- 2 day delivery model for AMIU from September 2022 – opening Monday and Tuesday 0800 – 16.00
- 4 days delivery model for AMIU from Jan 2023 – opening Monday, Tuesday, Thursday and Friday – 08.00 – 16.00

² <https://www.england.nhs.uk/urgent-emergency-care/urgent-treatment-centres/>

5.2 To re-open the unit would require moving existing workforce from Trafford Urgent Treatment Centre and/or Wythenshawe Urgent Treatment Centre in order to safely staff Altrincham Minor Injuries.

6.0 Longer Term Proposal

6.1 It is important that the people of Trafford have access to high quality urgent care, which is offered in a way that is simple to navigate and meets the needs of the population, working within resource and making best use of available workforce.

6.2 Therefore we are asking for the support of Health Scrutiny for a system review of urgent care to understand need, access, demand /capacity, workforce available and financial flows, by December 2022.

6.3 So that future strategic and operational recommendations can be made to Locality Board, Greater Manchester and which are co-produced with population of Trafford which ensure resources are aligned based on need, access is simplified, and variation and duplication are minimized whilst ensuring services are consistent with the national agenda in relation to the priorities for urgent care provision.

This page is intentionally left blank

Page 11

Altrincham Minor Injuries Unit Update

Background

- Altrincham MIU is based at Altrincham Hospital
- The MIU treats minor injuries including broken limbs, simple wounds, bites, minor burns, cuts and lacerations. It is unable to accept patients who present with illness such as coughs, colds, headaches, allergies and sore throats.
- General opening hours prior to April 2020 for the MIU are 08:00 – 20:00 from Monday to Friday and 10:00 – 18:00 at weekends. It is closed for public holidays.
- AMIU unit stood down in response to the pandemic on 1st April 2020 and stood back up to reduced hours on 24th June 2021 due to staffing shortfalls.
- The unit once again stood down on 28th of July 2021. During this time ENP staff were temporarily redeployed to work at Wythenshawe ED.
- A briefing was shared with the system in November 2021 of the ongoing suspension of the service
- Scrutiny advised in June 2022 of ongoing suspension due to continued staffing challenges until Autumn 2022
- Alternative model of delivery/options expected to be shared with system stakeholders and partners in Autumn 2022

Background

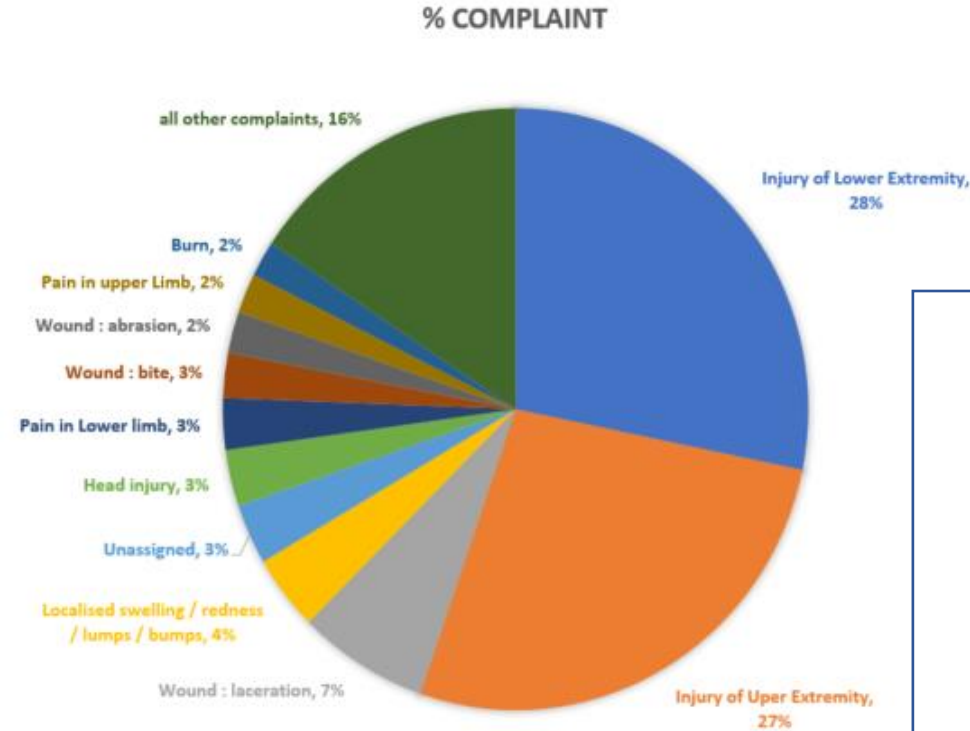
- Altrincham Minor Injuries is a well loved service by the people of Altrincham, known for quick and easy access.
- Constituents have raised concerns regarding the loss of Altrincham services with local MPs and Councillors
- It operates out of a relatively new Altrincham hospital ground floor alongside a Diagnostic Service.
- Altrincham Hospital also hosts Phlebotomy and outpatients services as well as renal dialysis.

MIU Usage Prior to Closure

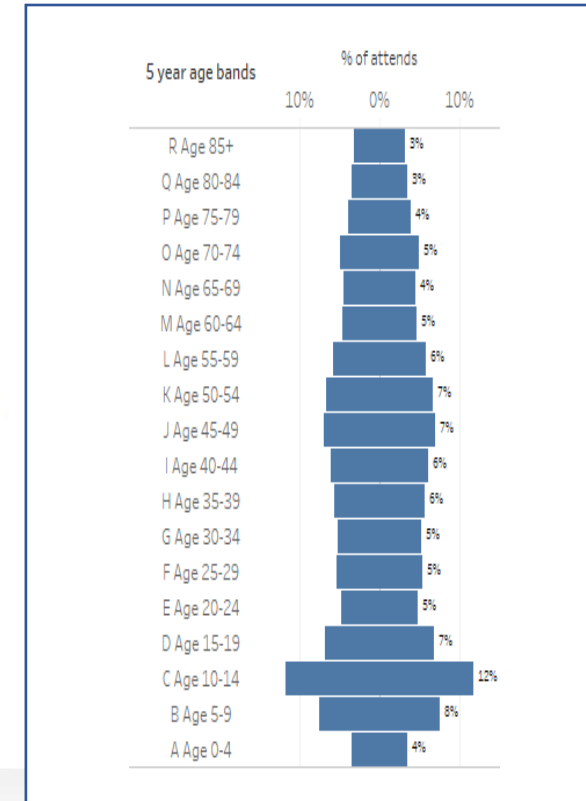
Attends at AMIU by chief complaint

Percentage of all 18,244 Patients 2019/20

Chief Complaint	% complaint
Injury of Lower Extremity	28
Injury of Uper Extremity	27
Wound : laceration	7
Localised swelling / redness / lumps / bumps	4
Unassigned	3
Head injury	3
Pain in Lower limb	3
Wound : bite	2
Wound : abrasion	2
Pain in upper Limb	2
Burn	2
all other complaints	16
Total	100%

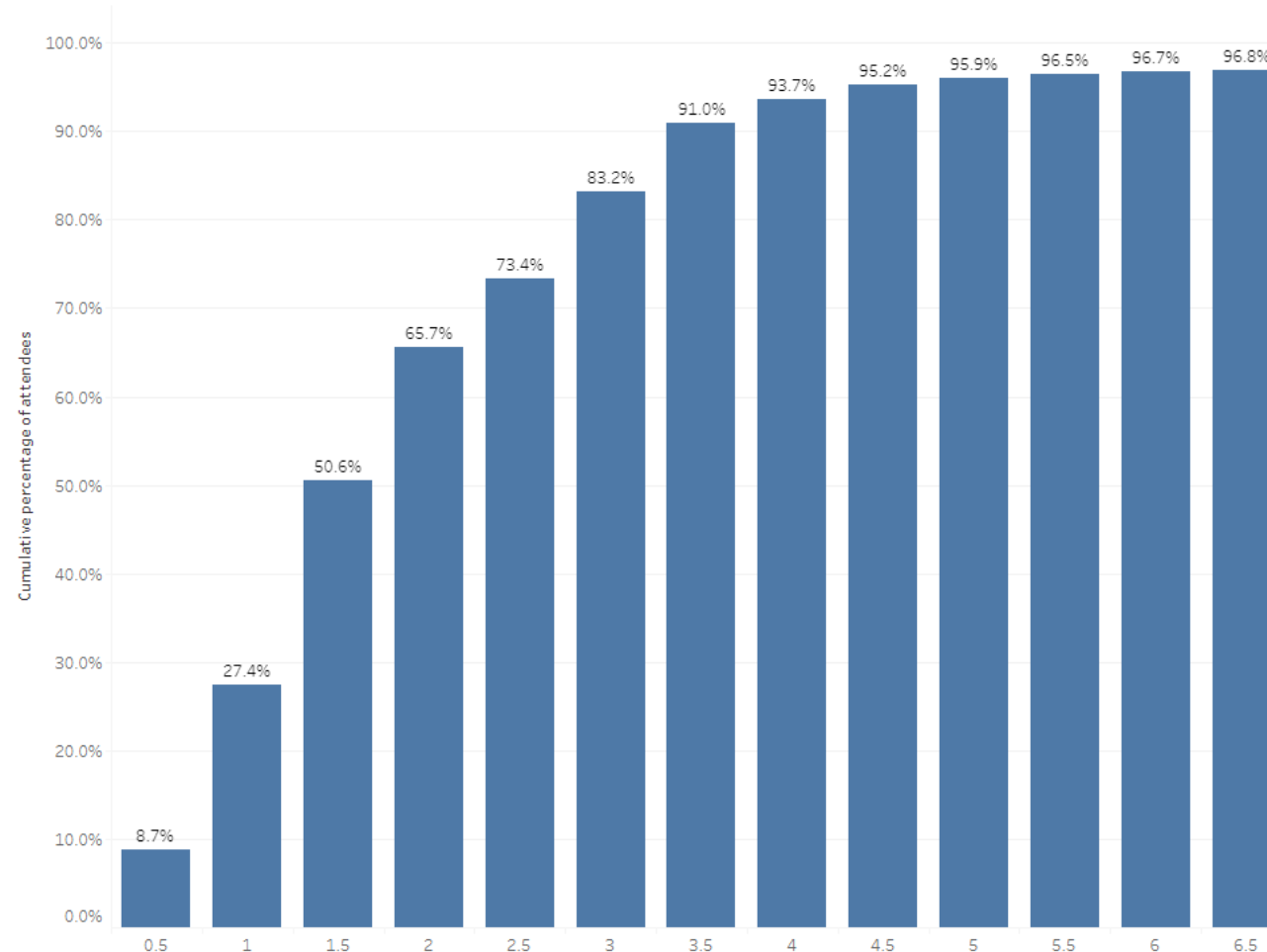


- The top two presenting complaints (injuries to arms and injuries to legs) made up 57% of all attendances
- The age profile of attendees reflects a relatively even split across most ages, but there is a spike in the “Age 5-9” and “Age 10-14” bands.



Patient Proximity to AMIU

Percentage of traftford attendees living within each half mile increment of AMIU
2019-20, based on Isoa centroids



- The graph outlines the distance travelled for patients to the AMIU
- As can be seen from the graph just over 50% of patients travel 1.5 miles to the AMIU and 73% of patient travelled 2.5 miles to the service

Impact of Stand down

Proportion of ED/UTC/MIU attends by Trafford patients at each site

% of trafford urgent care attendances by site

Provider site	Financial Year				
	2018-19	2019-20	2020-21	2021-22	2022-23
Wythenshawe	36.3%	36.6%	48.1%	51.6%	50.6%
Trafford General UCC	22.6%	23.4%	20.6%	19.4%	22.1%
Oxford road	19.7%	18.9%	21.8%	18.9%	18.4%
Salford Royal	7.0%	7.2%	9.1%	8.8%	8.2%
Altrincham MIU	14.1%	13.5%	0.0%	0.8%	0.0%
NMGH	0.3%	0.3%	0.3%	0.4%	0.4%

Trafford urgent care attendances by site

Provider site	Financial Year				
	2018-19	2019-20	2020-21	2021-22	2022-23
Wythenshawe	33,269	33,154	30,451	43,143	10,882
Trafford General UCC	20,697	21,181	13,054	16,250	4,751
Oxford road	18,020	17,139	13,803	15,826	3,962
Salford Royal	6,369	6,564	5,790	7,381	1,767
Altrincham MIU	12,949	12,269	2	659	1
NMGH	315	272	202	376	91

- When the AMIU stood down, the proportion of Trafford patients attending Wythenshawe increased. The increase was broadly in line with the proportion of patients previously attending the AMIU.
- There is a notable increase in the levels of activity at the Wythenshawe site with activity increasing from 33,154 to 43,143 for Trafford patient attendances
- Post 2019/20 ENP staff were temporarily redeployed to work at Wythenshawe ED.

N.B 2022-23 is part year April 2022-date

Short Term Delivery Proposals for Altrincham Minor Injury Unit (AMIU)

The proposals are:-

- 2 day delivery model for AMIU from September 2022
Monday & Tuesdays 08:00-16:00
- 4 days delivery model for AMIU from Jan 2023
Monday, Tuesday, Thursday & Friday 08:00-16:00

Page 17

Risks/Issues

Staff retention and sickness; As previously experienced extended nurse practitioner posts are difficult to recruit too, so any staff absence can result in difficulties in maintaining the service provision

Health Scrutiny are asked to advise on the proposal for stand up of the Altrincham MIU, which in turn will be recommended to Locality Board and NHS GM.

Questions?

Longer Term Proposal

- It is important that the people of Trafford have access to high quality urgent care, which is offered in a way that is simple to navigate and meets the needs of the population, working within resource and making best use of available workforce.
- Therefore we are asking for the support of Health Scrutiny for a system review of urgent care to understand need, access, demand /capacity, workforce available and financial flows, by December 2022.
- So that future strategic and operational recommendations can be made to Locality Board, NHS Greater Manchester and which are co-produced with population of Trafford which ensure resources are aligned based on need, access is simplified, variation and duplication are minimized whilst ensuring services are consistent with the national agenda in relation to the priorities for urgent care provision.

Urgent Care Access National Requirements

UTC NHSE Guidance

As part of the NHS Long Term Plan, the NHS is changing the way patients access services. Patients have often expressed that they are confused by the range of different services on offer for urgent care and as a result the NHS has outlined their intentions to simplify this through reducing these different service to primary care hubs, Urgent Treatment Centres and Emergency Departments.

Patients have told us the range of alternatives available can be confusing – Walk in Centres, Urgent Care Centres, Minor Injury Units and others with local names and all with differing levels of service. So A&E is understandably the default choice for many people unsure where to turn when they need urgent care or advice.

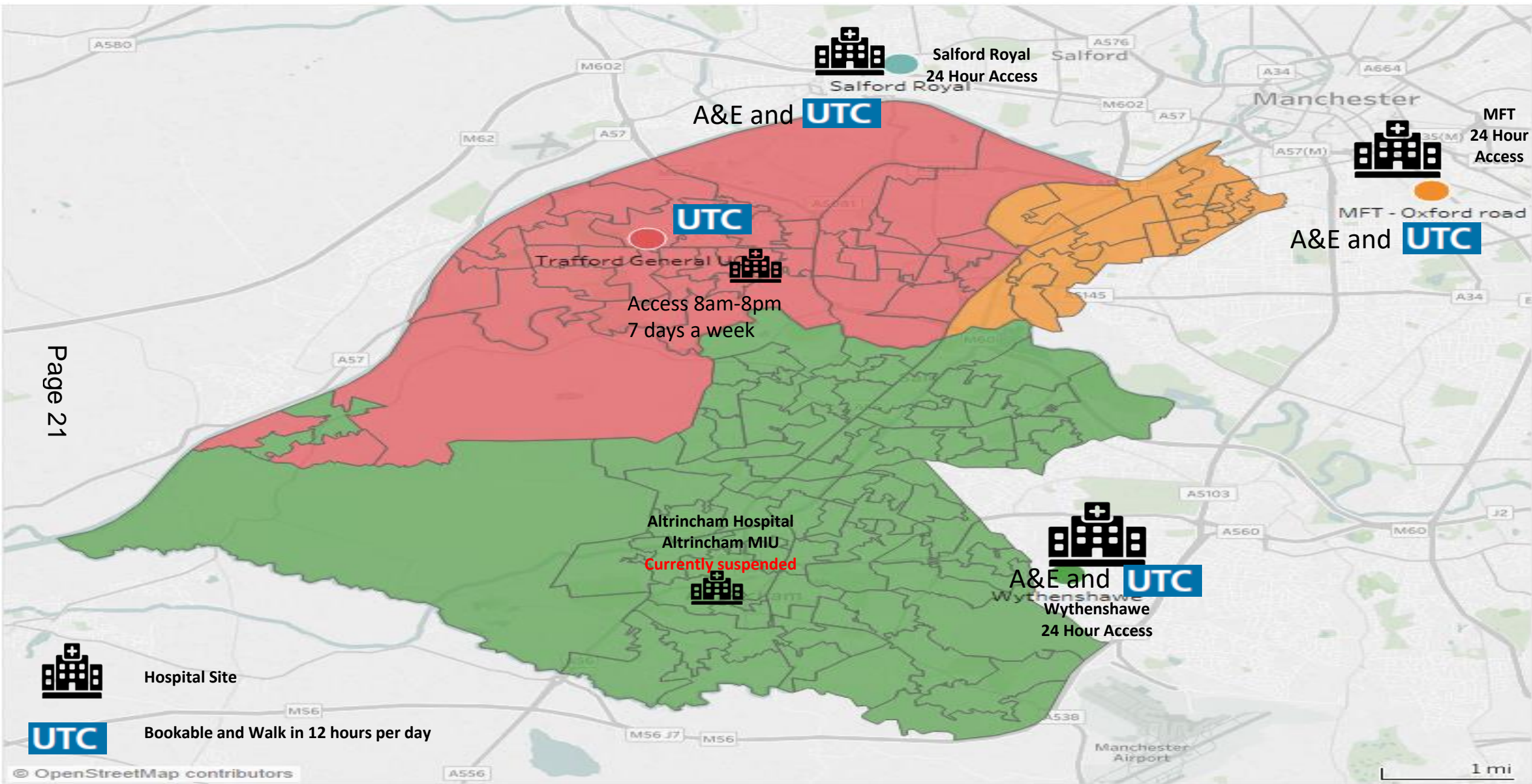
This is bad for the NHS because it puts unnecessary pressure on A&E and other parts of the urgent and emergency care system, and it's bad for patients because many are treated in the wrong setting.

Commonality of service provision under the UTC name will increasingly end the current confusing range of options and simplify the system so patients know where to go and have clarity of which services are on offer wherever they are in the country.

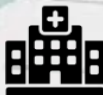
<https://www.england.nhs.uk/urgent-emergency-care/urgent-treatment-centres/>


NHSE Urgent Treatment Centre Principles and Standards – July 2017

Trafford Urgent Care Landscape



Page 21

 Hospital Site

 Bookable and Walk in 12 hours per day

Trafford South Locality: Health and Wider Determinant Overview

Wider Determinants & Demography

- The south locality has the largest proportion of residents over the age of 64.
- The south locality is Trafford’s least deprived locality, containing 4 of the 5 least deprived wards (out of 21) in the borough.
- While the south of Trafford is more affluent, there are small pockets of higher deprivation in areas of Village, Broadheath, and Altrincham.

Wider Determinants and Health

- A relationship occurs between health and deprivation, as we generally see better health outcomes in areas of lower deprivation, as indicated in the south versus the north of Trafford.
 - Compared to the rest of the South neighbourhood, there are slightly worse child health, mortality, and hospital incidence outcomes in Village and Broad heath wards where we have some small areas of higher deprivation, Despite this, in most cases these wards have similar or better outcomes than the Trafford average.

Page 22

Health Needs of Trafford’s South Locality

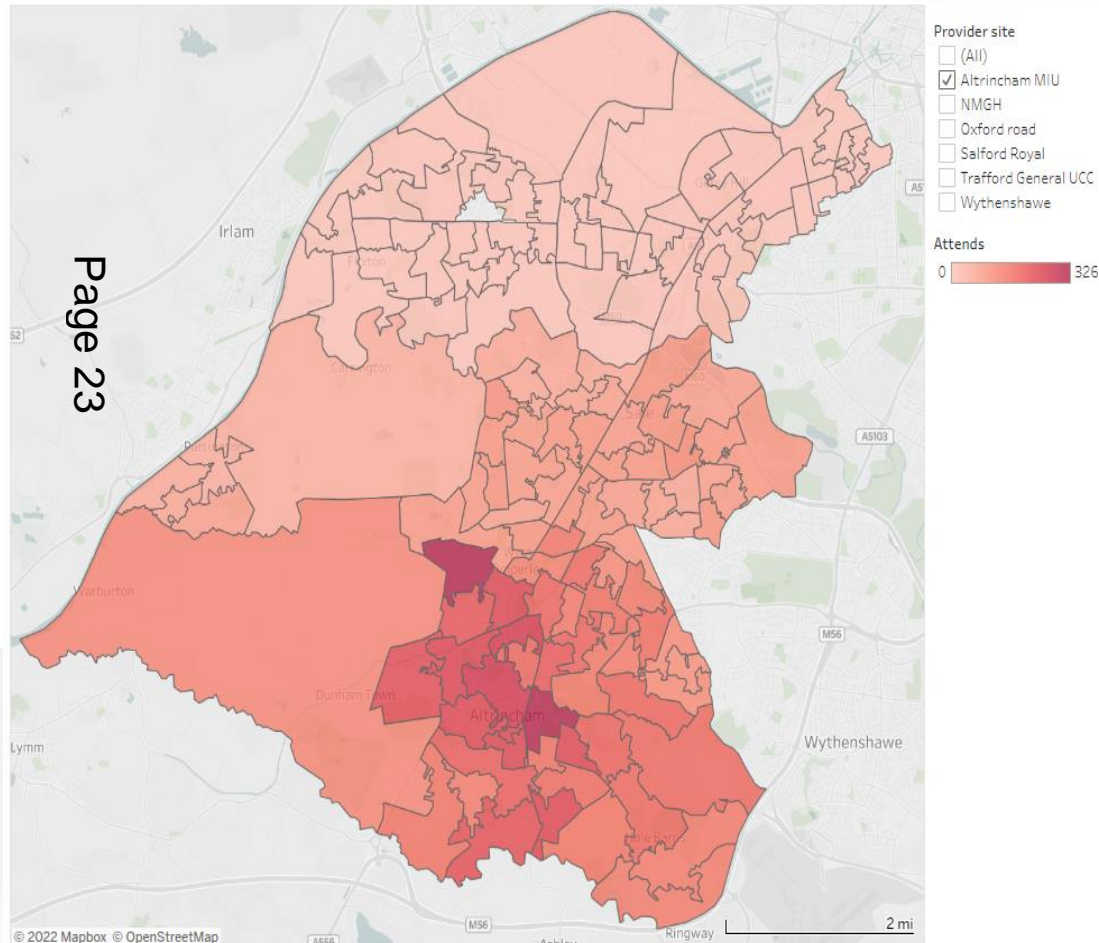
- A boy born in the south locality can expect to live 1.2 years longer than the average Trafford boy.
- A girl born in the south locality can expect to live 1.2 years longer than the average Trafford girl.
- While the south has a higher proportion of older people, its healthy life expectancy is also higher than the Trafford average, meaning that people are healthier for longer.
 - However, an older population does mean there are likely to be more people with conditions related to ageing in Trafford’s south locality.

Figure 1. Life Expectancy by Gender for Trafford Localities

	Male	Female
England	79.7	83.2
Trafford	80.2	83.9
North	77.2	83.1
West	78.7	83.4
Central	81.2	84.3
South	81.4	85.1

Usage of the service

AandE/UCC/MIU attends at Altrincham MIU, 2019-20



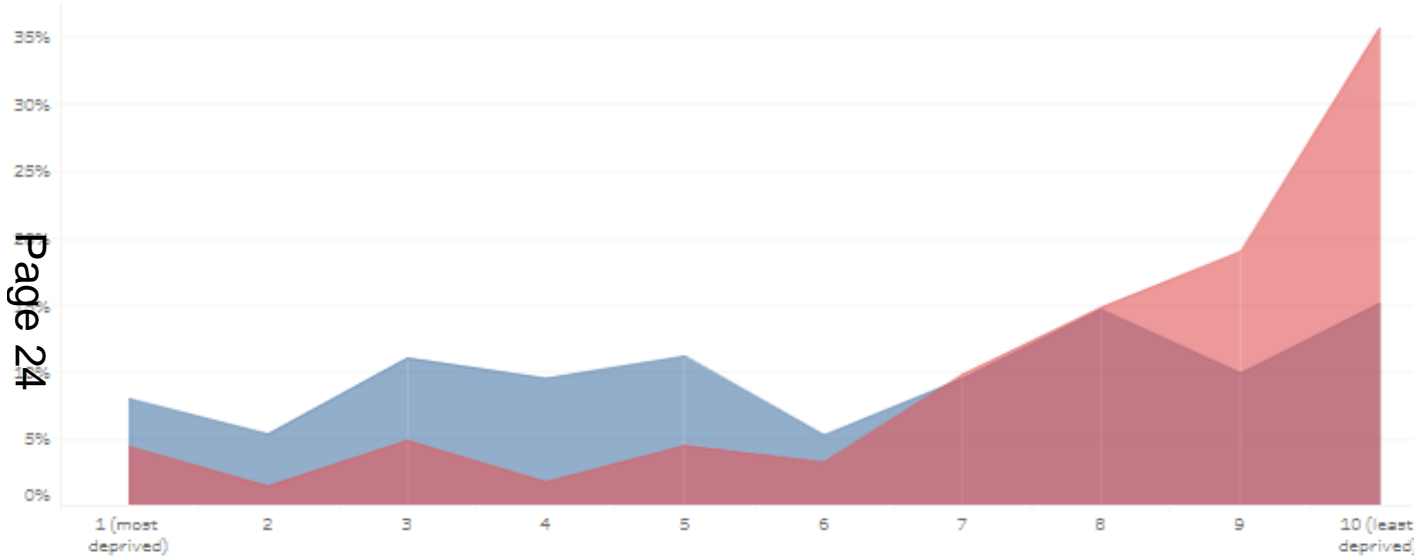
- Within Trafford, Altrincham MIU captures Minor Injuries attendees primarily from the Trafford South and Central regions.
- However, within this catchment, the majority of attendances come from Altrincham. This is a relatively narrow coverage of the borough which may not represent best value of the Trafford pound.
- For 2019/20, urgent care attendance for Trafford registered patients at Altrincham MIU was 12,272, representing 13.5% of the total urgent care attendance in that period. (There were 18,244, attendances in total at the AMIU during 2019/20, 5,972 of which were out of area patients)
- This is the second lowest utilisation (Salford lowest) in the borough amongst the monitored sites
- The map shows the levels of attends across Trafford by Lower Super Output Area

Usage of the service – by deprivation decile

Percentage of traftford attendances in each deprivation decile

Altrincham attends compared to other MFT sites 2019/20

Decile 1 is most deprived 10% nationally, 10 is least deprived



Page 24

DeprivationDecile	% of altrincham attends	% of non-altrincham attends
1 (most deprived)	4%	8%
2	1%	5%
3	5%	11%
4	2%	10%
5	5%	11%
6	3%	5%
7	10%	10%
8	15%	15%
9	19%	10%
10 (least deprived)	36%	15%

- The graph and table shows the % of Altrincham attends in each national deprivation decile in pink, % of other MFT site attends in each decile in blue.
- The graph outlines that the patients attending the AMIU were largely from less deprived areas.
- The highest proportion of attends at the AMIU were from the least deprived areas

Longer Term Proposal

- It is important that the people of Trafford have access to high quality urgent care, which is offered in a way that is simple to navigate and meets the needs of the population, working within resource and making best use of available workforce.
- Therefore we are asking for the support of Health Scrutiny for a system review of urgent care to understand need, access, demand /capacity, workforce available and financial flows, by December 2022.
- So that future strategic and operational recommendations can be made to Locality Board, NHS Greater Manchester and which are co-produced with population of Trafford which ensure resources are aligned based on need, access is simplified, variation and duplication are minimized whilst ensuring services are consistent with the national agenda in relation to the priorities for urgent care provision.

Questions?

Trafford Scrutiny Committee 2022/23 Work Programme

Wednesday 28 June 2022 – 6:30pm, Committee Rooms 2&3, Trafford Town Hall				
<i>Report submission deadline – midday Monday 20 June 2022</i>				
Item	Information	Executive Member(s)	Lead Officer(s)	Comments/Recommendations
Equalities Strategy	To receive a report on the updated Equalities strategy.	Councillor Slater	Diane Eaton	In addition to being at this meeting all reports to Health Scrutiny require author to state how the work links to the Equalities Strategy.
Integrated Care System	To receive a report on the new arrangements following the dissolution of Trafford CCG and the Creation of the new Integrated Care System Board.	N/A	Thom Maloney	
Altrincham Minor Injuries Unit	To receive information regarding the closure of the Altrincham Minor Injuries Unit. To lay out the context	N/A	John Wearing, Manchester Foundation Trust, Naomi Ledwith SCSB	Will be an update with a full in-depth report available in September.
Work Programme	For the Committee to consider suggestion received by the Scrutiny Committee from Executive Members			

	and Lead Officers. To also put forward suggestions of items to be considered during the year.			
--	---	--	--	--

Wednesday 14 September 2022 – 6:30 p.m., Committee Rooms 2&3, Trafford Town Hall				
<i>Report submission deadline – midday on Tuesday 6 September 2022</i>				
Item	Information	Executive Member(s)	Lead Officer(s)	Comments
Altrincham Minor Injuries Unit and Trafford General Urgent Care Centre	To review how the Urgent Care Centre is performing following the Pandemic.		Naomi Ledwith	
	A more detailed look following the completion of the review by MFT.		John Wearing, Manchester Foundation Trust, Naomi Ledwith ICS	
Dentistry	Concerns about waiting lists and access to dentists in Trafford following the Pandemic.			Raised by Councillor Lloyd as Manchester Council recently received an in-depth report on Dentistry (link to report below)

				and felt that it would be worth looking at Trafford's approach. PowerPoint Presentation (manchester.gov.uk)
ICS	To keep the Committee updated on the progress of new arrangements within Trafford and any impact upon services.		Thom Maloney Naomi Ledwith	Standing Item for 2022/23
Wednesday 16 November 2022 – 6:30 p.m., Committee Rooms 2&3, Trafford Town Hall				
<i>Report submission deadline – midday on Tuesday 8 November 2022</i>				
Item	Information	Executive Member(s)	Lead Officer(s)	Comments
Aids and Adaptations services within Trafford	Raised by Councillor Taylor due to delays for residents.	Executive Member for Adult Social Care	Corporate Director of Adult Social Care	
Access to Primary Care	Raised by Councillor Blackburn due to difficulties people were having in being able to make appointments post the pandemic.		Naomi Ledwith ICS	
Discharge from Hospital Support	To receive information as to the current position within Trafford and to review plans for the winter period.			

Page 2

Delays in receiving secondary care	To receive a report outlining the time it takes patients with heart conditions or Diabetes to progress through the health system and plans for improvement.			
Elective Procedures	To receive a report on performance for Elective procedures following the pandemic.			
ICS	To keep the Committee updated on the progress of new arrangements within Trafford and any impact upon services.		Thom Maloney Naomi Ledwith	Standing Item for 2022/23

Budget Scrutiny

There are two Budget Scrutiny sessions scheduled for the 29 November and 1 December 2022. Discussions at these sessions, will help formulate the Scrutiny Committee's Budget Scrutiny report to the Executive.

Wednesday 18 January 2023 – 6:30 p.m., Committee Rooms 2&3, Trafford Town Hall

Report submission deadline – midday on Tuesday 10 January 2023

Item	Information	Executive Member(s)	Lead Officer(s)	Comments
Cancer Diagnosis	High rates in Partington. Worth looking at Diagnosis and Mortality rates. Public Health already done some work in this area to look at the whole pathway.			Look at the National picture and see if there is a north south divide in this area.
Mental Health Services, including self-referral services	Health and Wellbeing Board doing a deep dive so may want to tie in with that work and the work of ICS.			
Alcohol and Substance Misuse	Health and Wellbeing Board doing a deep dive so may want to tie in with that work and the work of ICS.			
Mental Health Services, including self-referral services	Health and Wellbeing Board doing a deep dive so may want to tie in with that work and the work of ICS.			
ICS	To keep the Committee updated on the progress of new arrangements within Trafford and any impact upon services.		Thom Maloney Naomi Ledwith	Standing Item for 2022/23

Wednesday 1 March 2023 – 6:30 p.m., Committee Rooms 2&3, Trafford Town Hall

Report submission deadline – midday on Tuesday 21 February 2023

Item	Information	Executive Member(s)	Lead Officer(s)	Comments
Addressing of Health Inequalities	To look at the progress made during the year to tackle Health inequalities and to look at plans to address inequalities in 2023/24.			In addition to being at this meeting all reports to Health Scrutiny require author to state how the work helps to tackle health inequalities.
National Legislation Changes to Care Contributions and the Care Cap.		Councillor Carter		

Task and Finish work				
Item	Information	Executive Member(s)	Lead Officer(s)	Comments
GP lists	Possible Task and finish piece of work conducting a post pandemic follow up to the work done in 2019.	N/A	TBC	

Items to be scheduled				
Item	Information	Executive Member(s)	Lead Officer(s)	Comments

139933

This page is intentionally left blank